

SALB:

# The European Experience on Administrative Boundaries

- contribution and perspectives from EuroGeographics



Mr. Mick Cory  
Secretary General & Executive Director  
EuroGeographics

# The Benefits

- Provides **authoritative geospatial data of administrative boundaries** in support of the public good
- Supports **reliable global geospatial information** (Res/66/288) for measuring and monitoring the **Sustainable Development Goals** (Res/70/1)
- Provides authoritative dataset for Europe which can then **support UN operations**
- Administrative boundaries are a **priority core global fundamental geospatial data theme**

# EuroGeographics

- Not-for-profit Association
- 63 members from
- 46 European countries
- Responsible for geodetic, cadastral, land registry and mapping activities

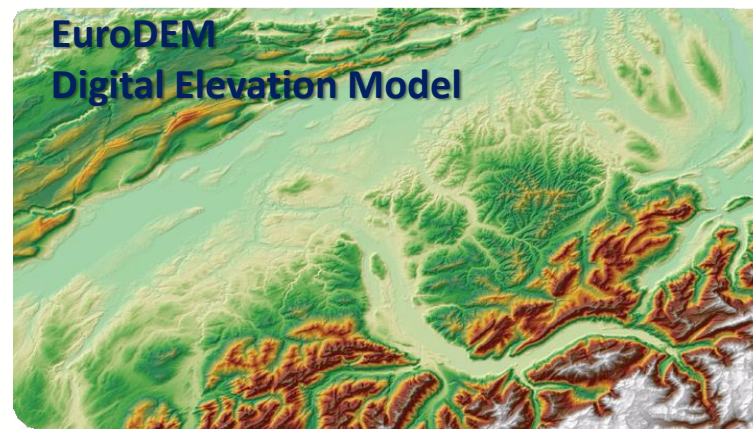
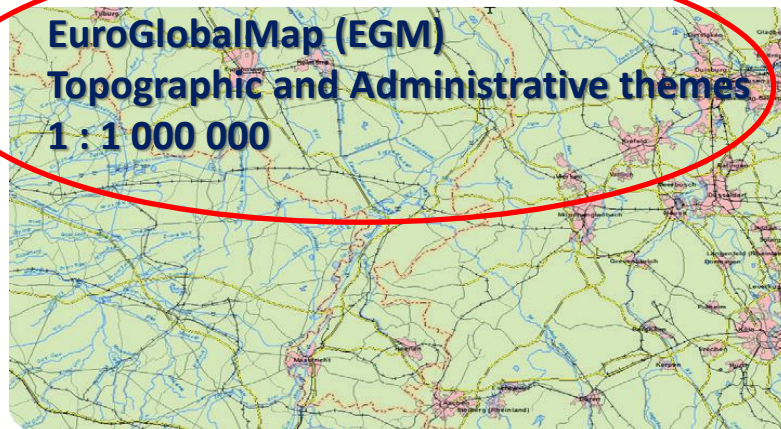
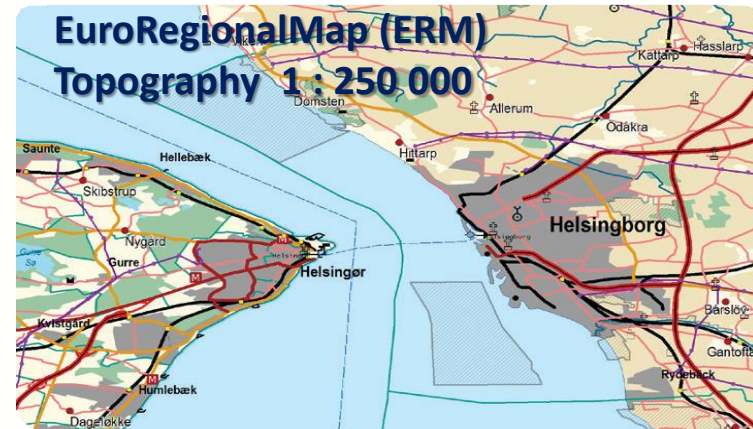
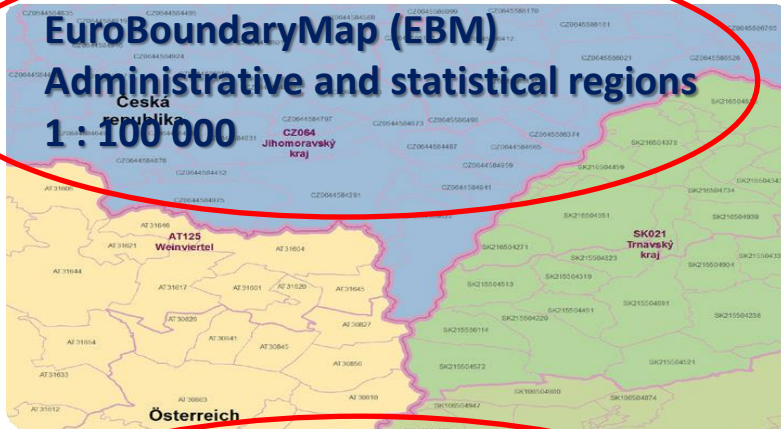


# Our Purpose & Activities

Defined formally in Articles of Association:

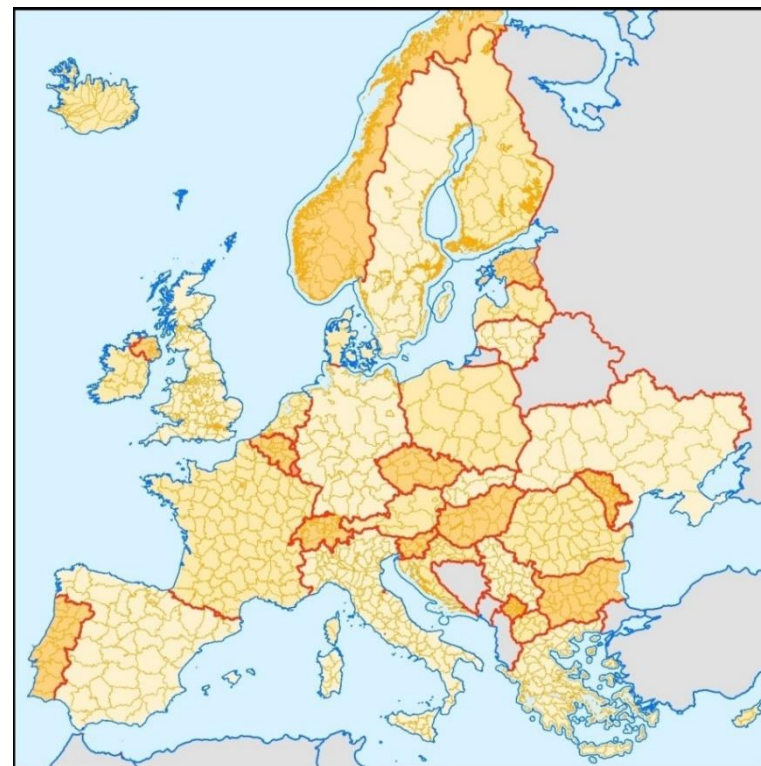
- Ensuring that members stay connected with policy developments at both European and international level;
- Representing members' interests and promoting their activities;
- Providing a platform for sharing best practice and experience;
- Facilitating access to members' data and expertise through products and collaborative projects.

# European geospatial data from official sources



# EuroBoundaryMap (EBM)

- Up-to-date geometry, names and codes of all administrative units for 55 countries\* from 39 data producers
- Contains a European-wide unique identifier for all administrative units
- Yearly update
- Production managed by BKG, Germany



\* According to ISO country code and Kosovo

# EuroBoundaryMap: Detail



Identify

Identify from: AdministrativeArea

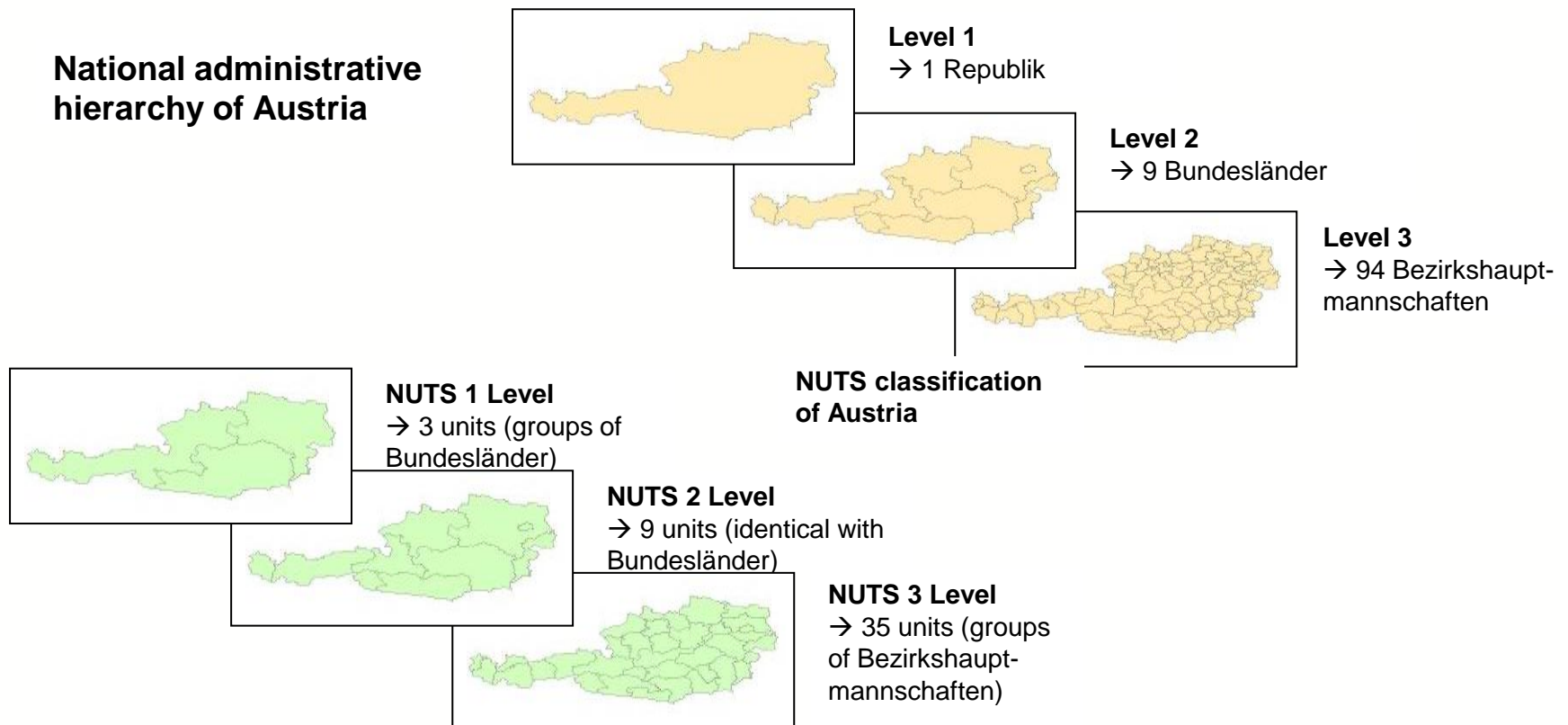
AdministrativeArea  
\_EG.EBM:DEBKGD20000E6GM-1

Location: 10,049582 53,577501 Decimal Degrees

Field	Value
Shape	Polygon
inspireId	_EG.EBM:DEBKGD20000E6GM-1
beginLifespanVersion	12.06.2014
ICC	DE
SHN	DE020001000001
TAA	Main area
USE	6th order
ISN	1315
NAMN	Hamburg
NAMA	Hamburg
NLN	GER
ROA	N.DE.BUILTUP.DEBKGD200000SA5
PPL	1746342
ARA	755,3
effectiveDate	01.01.1974

Identified 1 feature

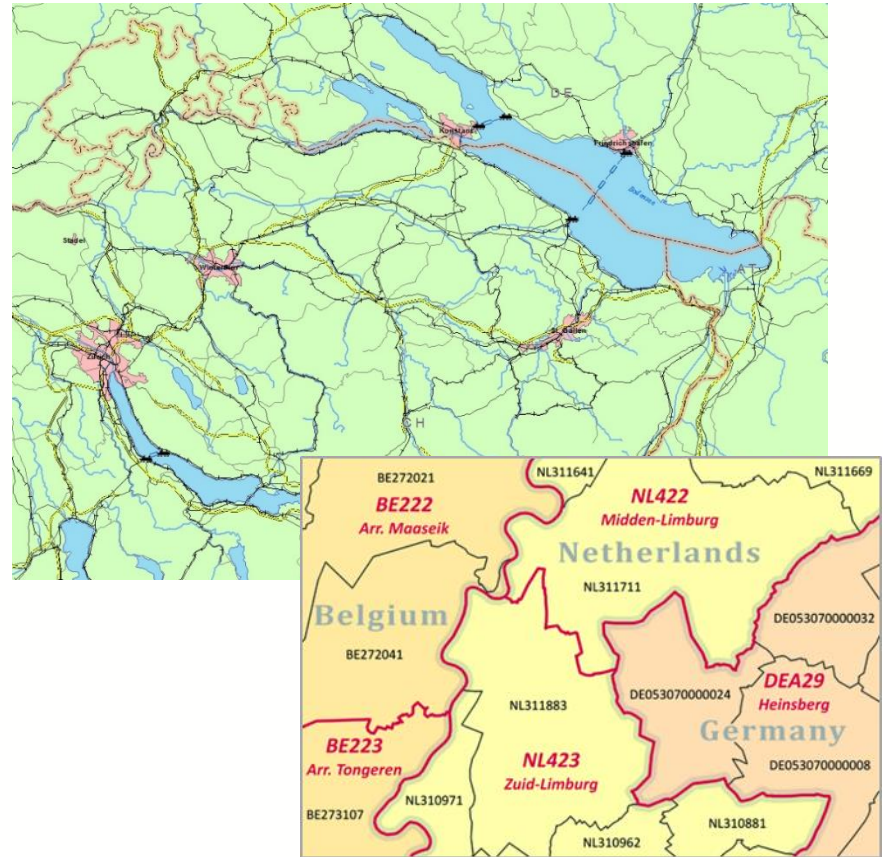
# EuroBoundaryMap: LAU vs. NUTS



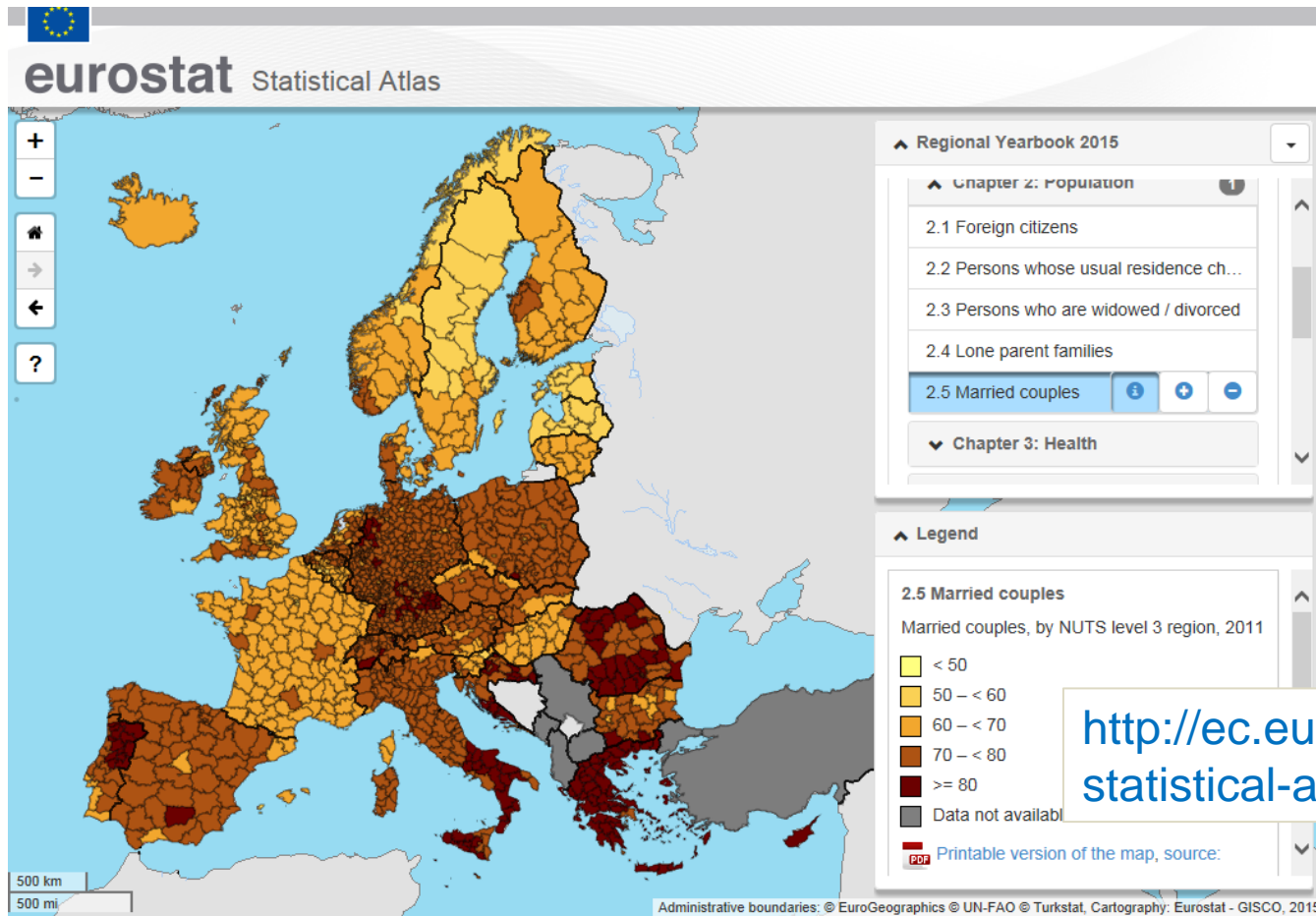


# EuroGlobalMap

- Topographic open data at 1:1 million scale.
- Generalised by IGN France
- Covers 45 countries and territories comprising 6 themes:
  - Administrative boundaries,
  - names locations,
  - transport networks,
  - settlements,
  - elevation;
  - water network.
- Available free of charge for any use under an open data licence.



# EuroBoundaryMap: Statistical Atlas of Eurostat



[http://ec.europa.eu/eurostat/  
statistical-atlas/gis/viewer](http://ec.europa.eu/eurostat/statistical-atlas/gis/viewer)

# Our Experience

- Recognise this is not a straightforward task, embrace the challenges;
- It takes time and organisation to do this;
- Trust & Mandate (as per our Articles);
- Central production - technical and organisational competence;
- Regional coordination;
- Clear annual production plan;
- Annual data producer technical meeting and webinars;
- Importance of capacity building;
- Finally - Continually improve, regularly review.

# Thank you



**EuroGeographics**

**Mr. Mick Cory**

Secretary General & Executive Director  
EuroGeographics